

SUNVIM 孚日电机
—Electric Motor—

三相同步磁阻电动机

Three-phase synchronous reluctance motor



山东孚日电机科技有限公司
SHANDONG SUNVIM MOTOR CO., LTD.

产品简介

Product Presentation



SCZ系列同步磁阻电机是我公司研发的超高效电动机产品，采用新型助磁同步磁阻电机技术设计制造的全封闭、自扇风冷超高效三相助磁同步磁阻电动机。能效符合国标一级能效要求 (IEC标准: IE5)，具有体积小，效率高，起动转矩大，噪声振动低等特点。

电机内部不含稀土永磁材料，结构简单、稳定可靠。采用标准的中小型异步电动机机壳，安装尺寸符合IEC标准，易安装替换。是一种高效节能，节约稀土资源的高效电机驱动解决方案。可用于驱动各种通用机械设备，如风机、水泵、空压机、纺织机械等，满足各种工业自动化领域设备驱动需求。根据应用场景，SCZ系列同步磁阻系列电机可提供多种安装方式和多种冷却方式设计，实现客户个性化定制需求。

SCZ series synchronous reluctance motor is a super high efficiency TEFC motor developed by our company. It is designed with new magnetic-assisted synchronous reluctance motor technology. The efficiency comply to New GB 1 and IEC IE5 standard. It has the characteristics of compact structure, high efficiency, high starting torque low noise and low vibration.

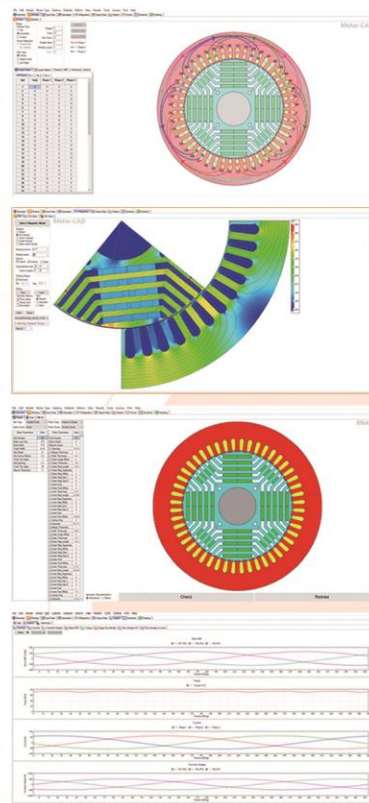
The motor does not contain magnet material of rare earth. The structure is more simple, stable and reliable. The house is the same as standard small and medium-sized asynchronous motor, and the dimension conforms to IEC standard. This makes it easy for installation and replacement. It is an efficient and energy-saving motor drive solution. It can be used to drive a variety of general mechanical equipment, such as fans, pumps, air compressors textile machinery and other industrial automatic drive system. SCZ series synchronous reluctance motors can offer a variety of installation methods and cooling methods, and provide different customization.

设计仿真

simulation design

使用专业的设计软件进行专业电机设计、电磁场有限元、振动噪音等分析等功能的综合设计与仿真。通过搭建科学、合理的电机磁路模型，电磁有限元模型，快速计算电磁，并结合实际运行的控制拓扑，模拟电机在各种控制策略下的运行特性。

The professional design software include motor design, finite element calculation, vibration and noise analysis and other comprehensive simulation. The building of scientific and reasonable motor magnetic circuit model, and electromagnetic finite element model assures a quick calculation of the electromagnetic. It can simulate the operation characteristics of motors in a variety of control systems with the combination of the actual control topology.



型号 Type	额定转速下的性能参数 Performance at nominal speed				控制器电压/Inverter Voltage 380V/400V			
	额定功率 Output kW	能效等级 IEC class	效率 Efficiency %	功率因数 Power Factor cosφ	电流 Current	转矩 Torque	最大转矩/ 额定转矩 T_{ol}/T_N	控制器型号 Drive
					I_N/A	$T_N/N\cdot m$		
SCZ4-132S1-30	5.5	IE4	90.9	0.88	11.3	17.5	1.5	SD300-4T5.5B(S)
SCZ4-132S2-30	7.5	IE4	91.7	0.88	15.3	23.9	1.5	SD300-4T7.5B(S)
SCZ4-160M1-30	11	IE4	92.6	0.89	22.0	35.0	1.5	SD300-4T11B(S)
SCZ4-160M2-30	15	IE4	93.3	0.89	29.8	47.8	1.5	SD300-4T15B(S)
SCZ4-160L-30	18.5	IE4	93.7	0.89	36.6	58.9	1.5	SD300-4T18.5(B)(S)
SCZ4-180M-30	22	IE4	94.0	0.89	43.4	70.0	1.5	SD300-4T22(B)(S)
SCZ4-200L1-30	30	IE4	94.5	0.89	58.8	95.5	1.5	SD300-4T30(B)(S)
SCZ4-200L2-30	37	IE4	94.8	0.89	72.3	118	1.5	SD300-4T37(B)(S)
SCZ4-225M-30	45	IE4	95.0	0.89	87.8	143	1.5	SD300-4T45(B)(S)
SCZ4-250M-30	55	IE4	95.3	0.89	107	175	1.5	SD300-4T55(B)(S)
SCZ4-280S-30	75	IE4	95.6	0.89	145	239	1.5	SD300-4T75(B)(S)
SCZ4-280M-30	90	IE4	95.8	0.89	174	287	1.5	SD300-4T90(S)
SCZ4-315S-30	110	IE4	96.0	0.89	212	350	1.5	SD300-4T110(S)
SCZ4-315M-30	132	IE4	96.2	0.89	254	420	1.5	SD300-4T132(S)
SCZ4-315L1-30	160	IE4	96.3	0.89	308	509	1.5	SD300-4T160(S)
SCZ4-315L2-30	200	IE4	96.5	0.89	384	637	1.5	SD300-4T200(S)-(L)

SCZ4-132S1-30	5.5	IE4	90.9	0.88	10.7	17.5	1.5	SD300-4T5.5B(S)
SCZ4-132S2-30	7.5	IE4	91.7	0.88	14.5	23.9	1.5	SD300-4T7.5B(S)
SCZ4-160M1-30	11	IE4	92.6	0.89	20.8	35.0	1.5	SD300-4T11B(S)
SCZ4-160M2-30	15	IE4	93.3	0.89	28.2	47.8	1.5	SD300-4T15B(S)
SCZ4-160L-30	18.5	IE4	93.7	0.89	34.6	58.9	1.5	SD300-4T18.5(B)(S)
SCZ4-180M-30	22	IE4	94.0	0.89	41.0	70.0	1.5	SD300-4T22(B)(S)
SCZ4-200L1-30	30	IE4	94.5	0.89	55.7	95.5	1.5	SD300-4T30(B)(S)
SCZ4-200L2-30	37	IE4	94.8	0.89	68.4	118	1.5	SD300-4T37(B)(S)
SCZ4-225M-30	45	IE4	95.0	0.89	83.1	143	1.5	SD300-4T45(B)(S)
SCZ4-250M-30	55	IE4	95.3	0.89	101	175	1.5	SD300-4T55(B)(S)
SCZ4-280S-30	75	IE4	95.6	0.89	138	239	1.5	SD300-4T75(B)(S)
SCZ4-280M-30	90	IE4	95.8	0.89	165	287	1.5	SD300-4T90(S)
SCZ4-315S-30	110	IE4	96.0	0.89	201	350	1.5	SD300-4T110(S)
SCZ4-315M-30	132	IE4	96.2	0.89	241	420	1.5	SD300-4T132(S)
SCZ4-315L1-30	160	IE4	96.3	0.89	291	509	1.5	SD300-4T160(S)
SCZ4-315L2-30	200	IE4	96.5	0.89	363	637	1.5	SD300-4T200(S)-(L)

型号 Type	额定转速下的性能参数 Performance at nominal speed				控制器电压/Inverter Voltage 380V/400V			
	额定功率 Output kW	能效等级 IEC class	效率 Efficiency %	功率因数 Power Factor cosφ	电流 Current	转矩 Torque	最大转矩/ 额定转矩 T_{oi}/T_N	控制器型号 Drive
					I_N/A	$T_N/N\cdot m$		
SCZ4-132S-15	5.5	IE4	91.9	0.80	12.3	35.0	1.5	SD300-4T5.5B(S)
SCZ4-132M-15	7.5	IE4	92.6	0.81	16.5	47.8	1.5	SD300-4T7.5B(S)
SCZ4-160M-15	11	IE4	93.3	0.83	23.4	70.0	1.5	SD300-4T11B(S)
SCZ4-160L-15	15	IE4	93.9	0.84	31.4	95.5	1.5	SD300-4T15B(S)
SCZ4-180M-15	18.5	IE4	94.2	0.85	38.1	118	1.5	SD300-4T18.5(B)(S)
SCZ4-180L-15	22	IE4	94.5	0.85	45.2	140	1.5	SD300-4T22(B)(S)
SCZ4-200L-15	30	IE4	94.9	0.85	61.4	191	1.5	SD300-4T30(B)(S)
SCZ4-225S-15	37	IE4	95.2	0.85	75.4	236	1.5	SD300-4T37(B)(S)
SCZ4-225M-15	45	IE4	95.4	0.85	91.5	287	1.5	SD300-4T45(B)(S)
SCZ4-250M-15	55	IE4	95.7	0.86	110	350	1.5	SD300-4T55(B)(S)
SCZ4-280S-15	75	IE4	96.0	0.87	148	478	1.5	SD300-4T75(B)(S)
SCZ4-280M-15	90	IE4	96.1	0.88	176	573	1.5	SD300-4T90(S)
SCZ4-315S-15	110	IE4	96.3	0.89	212	700	1.5	SD300-4T110(S)
SCZ4-315M-15	132	IE4	96.4	0.89	254	840	1.5	SD300-4T132(S)
SCZ4-315L1-15	160	IE4	96.6	0.89	307	1019	1.5	SD300-4T160(S)
SCZ4-315L2-15	200	IE4	96.7	0.90	379	1273	1.5	SD300-4T200(S)-(L)

SCZ4-132S-15	5.5	IE4	91.9	0.80	11.7	35.0	1.5	SD300-4T5.5B(S)
SCZ4-132M-15	7.5	IE4	92.6	0.81	15.6	47.8	1.5	SD300-4T7.5B(S)
SCZ4-160M-15	11	IE4	93.3	0.83	22.2	70.0	1.5	SD300-4T11B(S)
SCZ4-160L-15	15	IE4	93.9	0.84	29.7	95.5	1.5	SD300-4T15B(S)
SCZ4-180M-15	18.5	IE4	94.2	0.85	36.1	118	1.5	SD300-4T18.5(B)(S)
SCZ4-180L-15	22	IE4	94.5	0.85	42.7	140	1.5	SD300-4T22(B)(S)
SCZ4-200L-15	30	IE4	94.9	0.85	58.0	191	1.5	SD300-4T30(B)(S)
SCZ4-225S-15	37	IE4	95.2	0.85	71.4	236	1.5	SD300-4T37(B)(S)
SCZ4-225M-15	45	IE4	95.4	0.85	86.6	287	1.5	SD300-4T45(B)(S)
SCZ4-250M-15	55	IE4	95.7	0.86	104	350	1.5	SD300-4T55(B)(S)
SCZ4-280S-15	75	IE4	96.0	0.87	140	478	1.5	SD300-4T75(B)(S)
SCZ4-280M-15	90	IE4	96.1	0.88	166	573	1.5	SD300-4T90(S)
SCZ4-315S-15	110	IE4	96.3	0.89	200	700	1.5	SD300-4T110(S)
SCZ4-315M-15	132	IE4	96.4	0.89	240	840	1.5	SD300-4T132(S)
SCZ4-315L1-15	160	IE4	96.6	0.89	290	1019	1.5	SD300-4T160(S)
SCZ4-315L2-15	200	IE4	96.7	0.90	359	1273	1.5	SD300-4T200(S)-(L)

型号 Type	额定转速下的性能参数 Performance at nominal speed							
	控制器电压/Inverter Voltage 380V/400V							控制器型号 Drive
	额定功率 Output kW	能效等级 IEC class	效率 Efficiency %	功率因数 Power Factor cosφ	电流 Current	转矩 Torque	最大转矩/ 额定转矩 T_{oi}/T_N	
I_N/A					$T_N/N\cdot m$			
SCZ4-132S-10	3	IE4	88.6	0.71	7.9	28.7	1.5	SD300-4T3.0B(S)
SCZ4-132M1-10	4	IE4	89.5	0.72	10.2	38.2	1.5	SD300-4T5.5B(S)
SCZ4-132M2-10	5.5	IE4	90.5	0.72	13.9	52.5	1.5	SD300-4T5.5B(S)
SCZ4-160M-10	7.5	IE4	91.3	0.76	17.8	71.6	1.5	SD300-4T7.5B(S)
SCZ4-160L-10	11	IE4	92.3	0.77	25.5	105	1.5	SD300-4T11B(S)
SCZ4-180L-10	15	IE4	92.9	0.80	33.3	143	1.5	SD300-4T15B(S)
SCZ4-200L1-10	18.5	IE4	93.4	0.80	40.8	177	1.5	SD300-4T18.5(B)(S)
SCZ4-200L2-10	22	IE4	93.7	0.81	47.8	210	1.5	SD300-4T22(B)(S)
SCZ4-225M-10	30	IE4	94.2	0.82	64.1	287	1.5	SD300-4T30(B)(S)
SCZ4-250M-10	37	IE4	94.5	0.83	77.8	353	1.5	SD300-4T37(B)(S)
SCZ4-280S-10	45	IE4	94.8	0.83	94.3	430	1.5	SD300-4T45(B)(S)
SCZ4-280M-10	55	IE4	95.1	0.84	114	525	1.5	SD300-4T55(B)(S)
SCZ4-315S-10	75	IE4	95.4	0.84	154	716	1.5	SD300-4T75(B)(S)
SCZ4-315M-10	90	IE4	95.6	0.85	183	860	1.5	SD300-4T90(S)
SCZ4-315L1-10	110	IE4	95.8	0.85	223	1051	1.5	SD300-4T110(S)
SCZ4-315L2-10	132	IE4	96.0	0.86	264	1261	1.5	SD300-4T132(S)

SCZ4-132S-10	3	IE4	88.6	0.71	7.4	28.7	1.5	SD300-4T3.0B(S)
SCZ4-132M1-10	4	IE4	89.5	0.72	9.7	38.2	1.5	SD300-4T5.5B(S)
SCZ4-132M2-10	5.5	IE4	90.5	0.72	13.2	52.5	1.5	SD300-4T5.5B(S)
SCZ4-160M-10	7.5	IE4	91.3	0.76	16.9	71.6	1.5	SD300-4T7.5B(S)
SCZ4-160L-10	11	IE4	92.3	0.77	24.2	105	1.5	SD300-4T11B(S)
SCZ4-180L-10	15	IE4	92.9	0.80	31.5	143	1.5	SD300-4T15B(S)
SCZ4-200L1-10	18.5	IE4	93.4	0.80	38.6	177	1.5	SD300-4T18.5(B)(S)
SCZ4-200L2-10	22	IE4	93.7	0.81	45.2	210	1.5	SD300-4T22(B)(S)
SCZ4-225M-10	30	IE4	94.2	0.82	60.6	287	1.5	SD300-4T30(B)(S)
SCZ4-250M-10	37	IE4	94.5	0.83	73.6	353	1.5	SD300-4T37(B)(S)
SCZ4-280S-10	45	IE4	94.8	0.83	89.2	430	1.5	SD300-4T45(B)(S)
SCZ4-280M-10	55	IE4	95.1	0.84	107	525	1.5	SD300-4T55(B)(S)
SCZ4-315S-10	75	IE4	95.4	0.84	146	716	1.5	SD300-4T75(B)(S)
SCZ4-315M-10	90	IE4	95.6	0.85	173	860	1.5	SD300-4T90(S)
SCZ4-315L1-10	110	IE4	95.8	0.85	211	1051	1.5	SD300-4T110(S)
SCZ4-315L2-10	132	IE4	96.0	0.86	249	1261	1.5	SD300-4T132(S)

型号 Type	额定转速下的性能参数 Performance at nominal speed				控制器电压/Inverter Voltage 380V/400V			
	额定功率 Output kW	能效等级 IEC class	效率 Efficiency %	功率因数 Power Factor cosφ	电流 Current	转矩 Torque	最大转矩/ 额定转矩 T_{ol}/T_N	控制器型号 Drive
					I_N/A	$T_N/N\cdot m$		
SCZ5-132S1-30	5.5	IE5	92.6	0.88	11.1	17.5	1.5	SD300-4T5.5B(S)
SCZ5-132S2-30	7.5	IE5	93.3	0.88	15.1	23.9	1.5	SD300-4T7.5B(S)
SCZ5-160M1-30	11	IE5	94.0	0.89	21.7	35.0	1.5	SD300-4T11B(S)
SCZ5-160M2-30	15	IE5	94.5	0.89	29.4	47.8	1.5	SD300-4T15B(S)
SCZ5-160L-30	18.5	IE5	94.9	0.89	36.1	58.9	1.5	SD300-4T18.5(B)(S)
SCZ5-180M-30	22	IE5	95.1	0.89	42.9	70.0	1.5	SD300-4T22(B)(S)
SCZ5-200L1-30	30	IE5	95.5	0.89	58.2	95.5	1.5	SD300-4T30(B)(S)
SCZ5-200L2-30	37	IE5	95.8	0.89	71.6	118	1.5	SD300-4T37(B)(S)
SCZ5-225M-30	45	IE5	96.0	0.89	86.9	143	1.5	SD300-4T45(B)(S)
SCZ5-250M-30	55	IE5	96.2	0.89	106	175	1.5	SD300-4T55(B)(S)
SCZ5-280S-30	75	IE5	96.5	0.89	144	239	1.5	SD300-4T75(B)(S)
SCZ5-280M-30	90	IE5	96.6	0.89	173	287	1.5	SD300-4T90(S)
SCZ5-315S-30	110	IE5	96.8	0.89	211	350	1.5	SD300-4T110(S)
SCZ5-315M-30	132	IE5	96.9	0.89	252	420	1.5	SD300-4T132(S)
SCZ5-315L1-30	160	IE5	97.0	0.89	306	509	1.5	SD300-4T160(S)
SCZ5-315L2-30	200	IE5	97.2	0.89	381	637	1.5	SD300-4T200(S)-(L)

SCZ5-132S1-30	5.5	IE5	92.6	0.88	10.5	17.5	1.5	SD300-4T5.5B(S)
SCZ5-132S2-30	7.5	IE5	93.3	0.88	14.3	23.9	1.5	SD300-4T7.5B(S)
SCZ5-160M1-30	11	IE5	94.0	0.89	20.5	35.0	1.5	SD300-4T11B(S)
SCZ5-160M2-30	15	IE5	94.5	0.89	27.8	47.8	1.5	SD300-4T15B(S)
SCZ5-160L-30	18.5	IE5	94.9	0.89	34.2	58.9	1.5	SD300-4T18.5(B)(S)
SCZ5-180M-30	22	IE5	95.1	0.89	40.7	70.0	1.5	SD300-4T22(B)(S)
SCZ5-200L1-30	30	IE5	95.5	0.89	55.1	95.5	1.5	SD300-4T30(B)(S)
SCZ5-200L2-30	37	IE5	95.8	0.89	67.7	118	1.5	SD300-4T37(B)(S)
SCZ5-225M-30	45	IE5	96.0	0.89	82.2	143	1.5	SD300-4T45(B)(S)
SCZ5-250M-30	55	IE5	96.2	0.89	100	175	1.5	SD300-4T55(B)(S)
SCZ5-280S-30	75	IE5	96.5	0.89	136	239	1.5	SD300-4T75(B)(S)
SCZ5-280M-30	90	IE5	96.6	0.89	163	287	1.5	SD300-4T90(S)
SCZ5-315S-30	110	IE5	96.8	0.89	199	350	1.5	SD300-4T110(S)
SCZ5-315M-30	132	IE5	96.9	0.89	239	420	1.5	SD300-4T132(S)
SCZ5-315L1-30	160	IE5	97.0	0.89	289	509	1.5	SD300-4T160(S)
SCZ5-315L2-30	200	IE5	97.2	0.89	361	637	1.5	SD300-4T200(S)-(L)

型号 Type	额定转速下的性能参数 Performance at nominal speed				控制器电压/Inverter Voltage 380V/400V			
	额定功率 Output kW	能效等级 IEC class	效率 Efficiency %	功率因数 Power Factor cosφ	电流 Current	转矩 Torque	最大转矩/ 额定转矩 T_{oi}/T_N	控制器型号 Drive
					I_N/A	$T_N/N\cdot m$		
SCZ5-132S-15	5.5	IE5	93.4	0.80	12.1	35.0	1.5	SD300-4T5.5B(S)
SCZ5-132M-15	7.5	IE5	94.0	0.81	16.2	47.8	1.5	SD300-4T7.5B(S)
SCZ5-160M-15	11	IE5	94.6	0.83	23.1	70.0	1.5	SD300-4T11B(S)
SCZ5-160L-15	15	IE5	95.1	0.84	31.0	95.5	1.5	SD300-4T15B(S)
SCZ5-180M-15	18.5	IE5	95.3	0.85	37.7	118	1.5	SD300-4T18.5(B)(S)
SCZ5-180L-15	22	IE5	95.5	0.85	44.7	140	1.5	SD300-4T22(B)(S)
SCZ5-200L-15	30	IE5	95.9	0.85	60.7	191	1.5	SD300-4T30(B)(S)
SCZ5-225S-15	37	IE5	96.1	0.85	74.7	236	1.5	SD300-4T37(B)(S)
SCZ5-225M-15	45	IE5	96.3	0.85	90.7	287	1.5	SD300-4T45(B)(S)
SCZ5-250M-15	55	IE5	96.5	0.86	109	350	1.5	SD300-4T55(B)(S)
SCZ5-280S-15	75	IE5	96.7	0.87	147	478	1.5	SD300-4T75(B)(S)
SCZ5-280M-15	90	IE5	96.9	0.88	174	573	1.5	SD300-4T90(S)
SCZ5-315S-15	110	IE5	97.0	0.89	210	700	1.5	SD300-4T110(S)
SCZ5-315M-15	132	IE5	97.1	0.89	252	840	1.5	SD300-4T132(S)
SCZ5-315L1-15	160	IE5	97.2	0.89	305	1019	1.5	SD300-4T160(S)
SCZ5-315L2-15	200	IE5	97.4	0.90	376	1273	1.5	SD300-4T200(S)-(L)

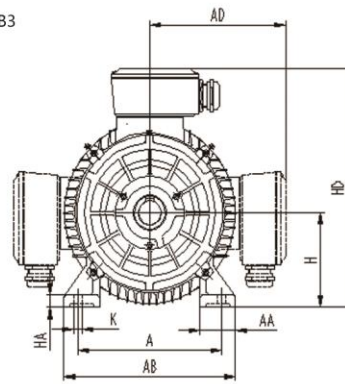
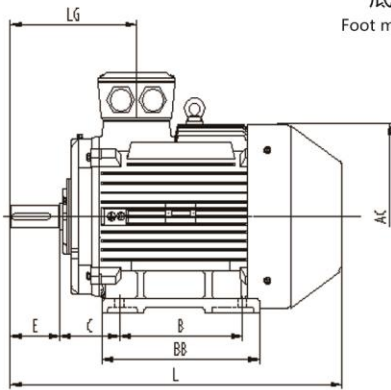
SCZ5-132S-15	5.5	IE5	93.4	0.80	11.5	35.0	1.5	SD300-4T5.5B(S)
SCZ5-132M-15	7.5	IE5	94.0	0.81	15.4	47.8	1.5	SD300-4T7.5B(S)
SCZ5-160M-15	11	IE5	94.6	0.83	21.9	70.0	1.5	SD300-4T11B(S)
SCZ5-160L-15	15	IE5	95.1	0.84	29.3	95.5	1.5	SD300-4T15B(S)
SCZ5-180M-15	18.5	IE5	95.3	0.85	35.6	118	1.5	SD300-4T18.5(B)(S)
SCZ5-180L-15	22	IE5	95.5	0.85	42.3	140	1.5	SD300-4T22(B)(S)
SCZ5-200L-15	30	IE5	95.9	0.85	57.4	191	1.5	SD300-4T30(B)(S)
SCZ5-225S-15	37	IE5	96.1	0.85	70.7	236	1.5	SD300-4T37(B)(S)
SCZ5-225M-15	45	IE5	96.3	0.85	85.8	287	1.5	SD300-4T45(B)(S)
SCZ5-250M-15	55	IE5	96.5	0.86	103	350	1.5	SD300-4T55(B)(S)
SCZ5-280S-15	75	IE5	96.7	0.87	139	478	1.5	SD300-4T75(B)(S)
SCZ5-280M-15	90	IE5	96.9	0.88	165	573	1.5	SD300-4T90(S)
SCZ5-315S-15	110	IE5	97.0	0.89	199	700	1.5	SD300-4T110(S)
SCZ5-315M-15	132	IE5	97.1	0.89	238	840	1.5	SD300-4T132(S)
SCZ5-315L1-15	160	IE5	97.2	0.89	289	1019	1.5	SD300-4T160(S)
SCZ5-315L2-15	200	IE5	97.4	0.90	356	1273	1.5	SD300-4T200(S)-(L)

型号 Type	额定转速下的性能参数 Performance at nominal speed								
	控制器电压/Inverter Voltage 380V/400V							最大转矩/ 额定转矩 T_{oi}/T_N	控制器型号 Drive
	额定功率 Output kW	能效等级 IEC class	效率 Efficiency %	功率因数 Power Factor $\cos\phi$	电流 Current I_N/A	转矩 Torque $T_N/N\cdot m$			
SCZ5-132S-10	3	IE5	90.6	0.71	7.7	28.7	1.5	SD300-4T3.0B(S)	
SCZ5-132M1-10	4	IE5	91.4	0.72	10.0	38.2	1.5	SD300-4T5.5B(S)	
SCZ5-132M2-10	5.5	IE5	92.2	0.72	13.7	52.5	1.5	SD300-4T5.5B(S)	
SCZ5-160M-10	7.5	IE5	92.9	0.76	17.5	71.6	1.5	SD300-4T7.5B(S)	
SCZ5-160L-10	11	IE5	93.7	0.77	25.2	105	1.5	SD300-4T11B(S)	
SCZ5-180L-10	15	IE5	94.3	0.80	32.8	143	1.5	SD300-4T15B(S)	
SCZ5-200L1-10	18.5	IE5	94.6	0.80	40.3	177	1.5	SD300-4T18.5(B)(S)	
SCZ5-200L2-10	22	IE5	94.9	0.81	47.2	210	1.5	SD300-4T22(B)(S)	
SCZ5-225M-10	30	IE5	95.3	0.82	63.3	287	1.5	SD300-4T30(B)(S)	
SCZ5-250M-10	37	IE5	95.6	0.83	76.9	353	1.5	SD300-4T37(B)(S)	
SCZ5-280S-10	45	IE5	95.8	0.83	93.4	430	1.5	SD300-4T45(B)(S)	
SCZ5-280M-10	55	IE5	96.0	0.84	113	525	1.5	SD300-4T55(B)(S)	
SCZ5-315S-10	75	IE5	96.3	0.84	153	716	1.5	SD300-4T75(B)(S)	
SCZ5-315M-10	90	IE5	96.5	0.85	181	860	1.5	SD300-4T90(S)	
SCZ5-315L1-10	110	IE5	96.6	0.85	221	1051	1.5	SD300-4T110(S)	
SCZ5-315L2-10	132	IE5	96.8	0.86	262	1261	1.5	SD300-4T132(S)	

SCZ5-132S-10	3	IE5	90.6	0.71	7.3	28.7	1.5	SD300-4T3.0B(S)
SCZ5-132M1-10	4	IE5	91.4	0.72	9.5	38.2	1.5	SD300-4T5.5B(S)
SCZ5-132M2-10	5.5	IE5	92.2	0.72	12.9	52.5	1.5	SD300-4T5.5B(S)
SCZ5-160M-10	7.5	IE5	92.9	0.76	16.6	71.6	1.5	SD300-4T7.5B(S)
SCZ5-160L-10	11	IE5	93.7	0.77	23.8	105	1.5	SD300-4T11B(S)
SCZ5-180L-10	15	IE5	94.3	0.80	31.0	143	1.5	SD300-4T15B(S)
SCZ5-200L1-10	18.5	IE5	94.6	0.80	38.1	177	1.5	SD300-4T18.5(B)(S)
SCZ5-200L2-10	22	IE5	94.9	0.81	44.7	210	1.5	SD300-4T22(B)(S)
SCZ5-225M-10	30	IE5	95.3	0.82	59.9	287	1.5	SD300-4T30(B)(S)
SCZ5-250M-10	37	IE5	95.6	0.83	72.8	353	1.5	SD300-4T37(B)(S)
SCZ5-280S-10	45	IE5	95.8	0.83	88.3	430	1.5	SD300-4T45(B)(S)
SCZ5-280M-10	55	IE5	96.0	0.84	106	525	1.5	SD300-4T55(B)(S)
SCZ5-315S-10	75	IE5	96.3	0.84	145	716	1.5	SD300-4T75(B)(S)
SCZ5-315M-10	90	IE5	96.5	0.85	171	860	1.5	SD300-4T90(S)
SCZ5-315L1-10	110	IE5	96.6	0.85	209	1051	1.5	SD300-4T110(S)
SCZ5-315L2-10	132	IE5	96.8	0.86	247	1261	1.5	SD300-4T132(S)

外形及安装尺寸 Dimensions Mount

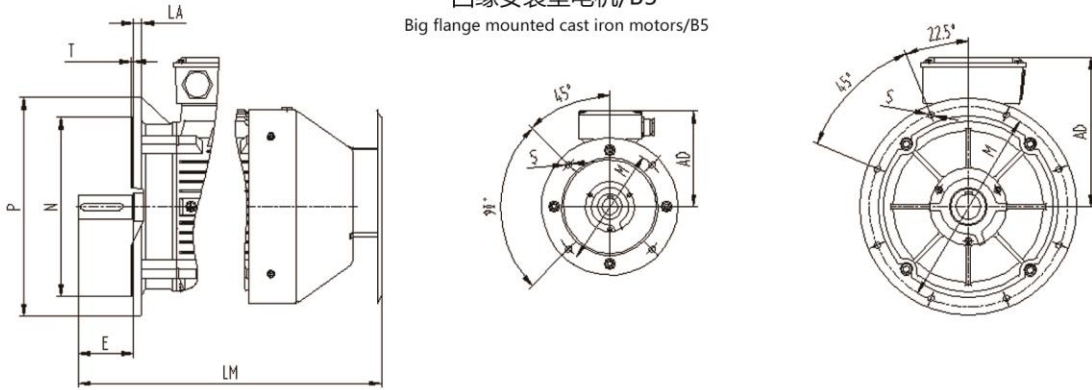
底脚安装型电机/B3
Foot mounted cast iron motors/B3



机座号 Frame	转速 Speed	中心高 H	底脚安装 Foot Mounting				轴伸 Shaft Extension							法兰 Flange				
			A	B	C	D	E	ED	F	G	GD	DH	M	N	P	S	T	
132S	1000~3000	132	216	140	89	38	80	56	10	33	8	M12*28	265	230	300	14.5	4	
132M	1000~3000	132	216	178	89	38	80	56	10	33	8	M12*28	265	230	300	14.5	4	
160M	1000~3000	160	254	210	108	42	110	80	12	37	8	M16*36	300	250	350	18.5	5	
160L	1000~3000	160	254	254	108	42	110	80	12	37	8	M16*36	300	250	350	18.5	5	
180M	1000~3000	180	279	241	121	48	110	80	14	42.5	9	M16*36	300	250	350	18.5	5	
180L	1000~3000	180	279	279	121	48	110	80	14	42.5	9	M16*36	300	250	350	18.5	5	
200L	1000~3000	200	318	305	133	55	110	90	16	49	10	M20*42	350	300	400	18.5	5	
225S	1000~1500	225	356	286	149	60	140	100	18	53	11	M20*42	400	350	450	18.5	5	
225M	3000	225	356	311	149	55	110	80	16	49	10	M20*42	400	350	450	18.5	5	
225M	1000~1500	225	356	311	149	60	140	100	18	53	11	M20*42	400	350	450	18.5	5	
250M	3000	250	406	349	168	60	140	100	18	53	11	M20*42	500	450	550	18.5	5	
250M	1000~1500	250	406	349	168	65	140	100	18	53	11	M20*42	500	450	550	18.5	5	
280S	3000	280	457	368	190	65	140	100	18	53	11	M20*42	500	450	550	18.5	5	
280S	1000~1500	280	457	368	190	75	140	100	20	67.5	12	M20*42	500	450	550	18.5	5	
280M	3000	280	457	419	190	65	140	100	18	58	11	M20*42	500	450	550	18.5	5	
280M	1000~1500	280	457	419	190	75	140	100	20	67.5	12	M20*42	500	450	550	18.5	5	
315S	3000	315	508	406	216	65	140	100	18	58	11	M20*42	600	550	660	24	6	
315M	3000	315	508	457	216	65	140	100	18	58	11	M20*42	600	550	660	24	6	
315L	3000	315	508	508	216	65	140	100	18	58	11	M20*42	600	550	660	24	6	
315S	1000~1500	315	508	406	216	80	170	130	22	71	14	M20*42	600	550	660	24	6	
315M	1000~1500	315	508	457	216	80	170	130	22	71	14	M20*42	600	550	660	24	6	
315L	1000~1500	315	508	508	216	80	170	130	22	71	14	M20*42	600	550	660	24	6	

外形及安装尺寸 Dimensions Mount

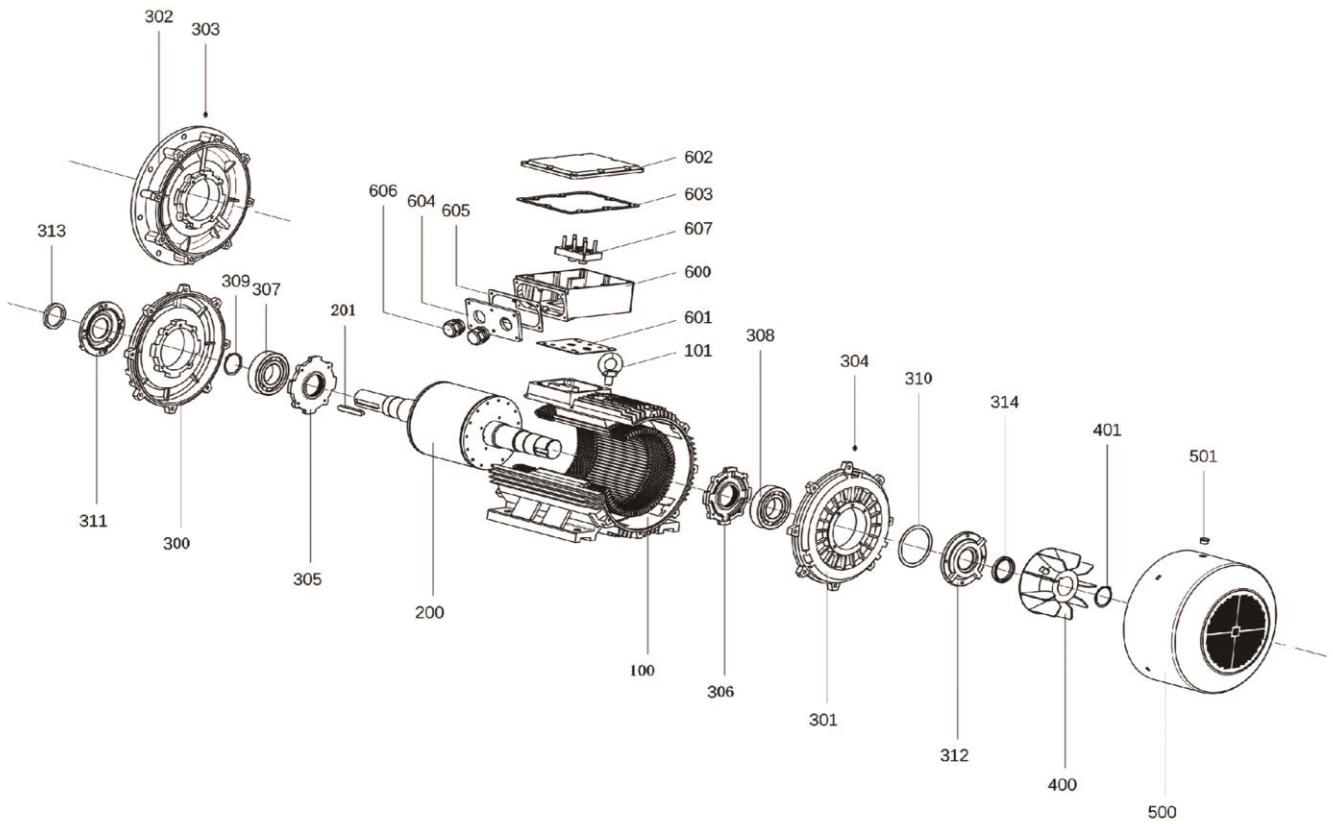
凸缘安装型电机/B5
Big flange mounted cast iron motors/B5



机座号 Frame	转速 Speed	中心高 H	底脚尺寸 Foot Size					整机外形尺寸 Overall dimensions						
			HA	AA	AB	BB	AC	AD	HD	LA	LG	L	LM	KK
132S	1000 ~ 3000	132	16	52	265	230	300	245	375	13	167	515	565	M32*1.5
132M	1000 ~ 3000	132	16	52	265	265	300	245	375	13	167	545	595	M32*1.5
160M	1000 ~ 3000	160	19	65	315	310	335	270	430	15	268	665	720	M40*1.5
160L	1000 ~ 3000	160	19	65	315	345	335	270	430	15	268	715	770	M40*1.5
180M	1000 ~ 3000	180	22	70	345	320	380	285	465	15	277	730	785	M40*1.5
180L	1000 ~ 3000	180	22	70	345	370	380	285	465	15	277	780	835	M40*1.5
200L	1000 ~ 3000	200	25	80	390	355	420	310	510	17	298	790	860	M50*1.5
225S	1000 ~ 1500	225	28	75	435	350	465	335	560	19	338	840	910	M50*1.5
225M	3000	225	28	75	435	375	465	335	560	19	338	865	935	M50*1.5
225M	1000 ~ 1500	225	28	75	435	375	465	335	560	19	338	865	935	M50*1.5
250M	3000	250	33	100	485	450	520	385	635	20	360	945	1025	M63*1.5
250M	1000 ~ 1500	250	33	100	485	450	520	385	635	20	360	945	1025	M63*1.5
280S	3000	280	35	100	550	490	570	415	695	22	344	990	1080	M63*1.5
280S	1000 ~ 1500	280	35	105	550	490	570	415	695	22	344	990	1080	M63*1.5
280M	3000	280	35	105	550	540	570	415	695	22	344	1045	1125	M63*1.5
280M	1000 ~ 1500	280	35	105	550	540	570	415	695	22	344	1045	1125	M63*1.5
315S	3000	315	45	125	630	515	650	490	805	24	417	1185	1285	M63*1.5
315M	3000	315	45	125	630	625	650	490	805	24	417	1295	1395	M63*1.5
315L	3000	315	45	125	630	625	650	490	805	24	417	1295	1395	M63*1.5
315S	1000 ~ 1500	315	45	125	630	515	650	490	805	24	417	1185	1315	M63*1.5
315M	1000 ~ 1500	315	45	125	630	625	650	490	805	24	417	1325	1425	M63*1.5
315L	1000 ~ 1500	315	45	125	630	625	650	490	805	24	417	1325	1425	M63*1.5

SCZ系列电动机爆炸图

Exploded Section View Of SCZ Series Motors



序号 名称

100 定子
101 吊环
200 转子
201 键
300 D 端端盖
301 N 端端盖
302 凸缘端盖
303 D 端油杯
304 N 端油杯
305 D 端轴承内盖
306 N 端轴承内盖

Pos. Name

100 Frame with stator pack
101 Lift eye
200 Rotor
201 Key for shaft extension
300 Endshield D side
301 Endshield N side
302 Flange
303 Grease nipple D side
304 Grease nipple N side
305 Inner bearing cover D side
306 Inner bearing cover N side

序号 名称

307 D 端轴承
308 N 端轴承
309 挡圈
310 波形弹簧
311 D 端轴承外盖
312 N 端轴承外盖
313 D 端油封
314 N 端油封
400 风扇
401 挡圈

Pos. Name

307 Bearing D side
308 Bearing N side
309 Retaining ring for shaft
310 Preload washer
311 Outer bearing cover D side
312 Outer bearing cover N side
313 Oil seal D side
314 Oil seal N side
400 Fan
401 Retaining ring

序号 名称

500 风罩
501 塞子
600 接线盒座
601 密封垫
602 接线盒盖
603 密封垫
604 出线口盖板
605 密封垫
606 锁紧头
607 接线板

Pos. Name

500 Fan cover
501 Plug
600 Terminal box
601 Gasket
602 Terminal box cover
603 Gasket
604 Gland plate
605 Gasket
606 Cable gland
607 Terminal board

SUNVIM 孚日电机
—Electric Motor—

地址：山东省潍坊市高密市夏庄镇孚园前街1号
电话：0086-536-5827128 / 0086-536-5827136
邮箱：motorexport@sunvim.com
网址：<https://www.sunvimmotor.com/>
<http://www.sunvimdj.com/>

Add: No.1 FUYUAN QIAN STREET, XIAZHUANG TOWN,
GAOMI, SHANDONG , CHINA 261500.
Tel: 0086-536-5827128 / 0086-536-5827136
Mail: motorexport@sunvim.com
Web: <https://www.sunvimmotor.com/>
<http://www.sunvimdj.com/>



官方微信公众号
WeChat Official Account